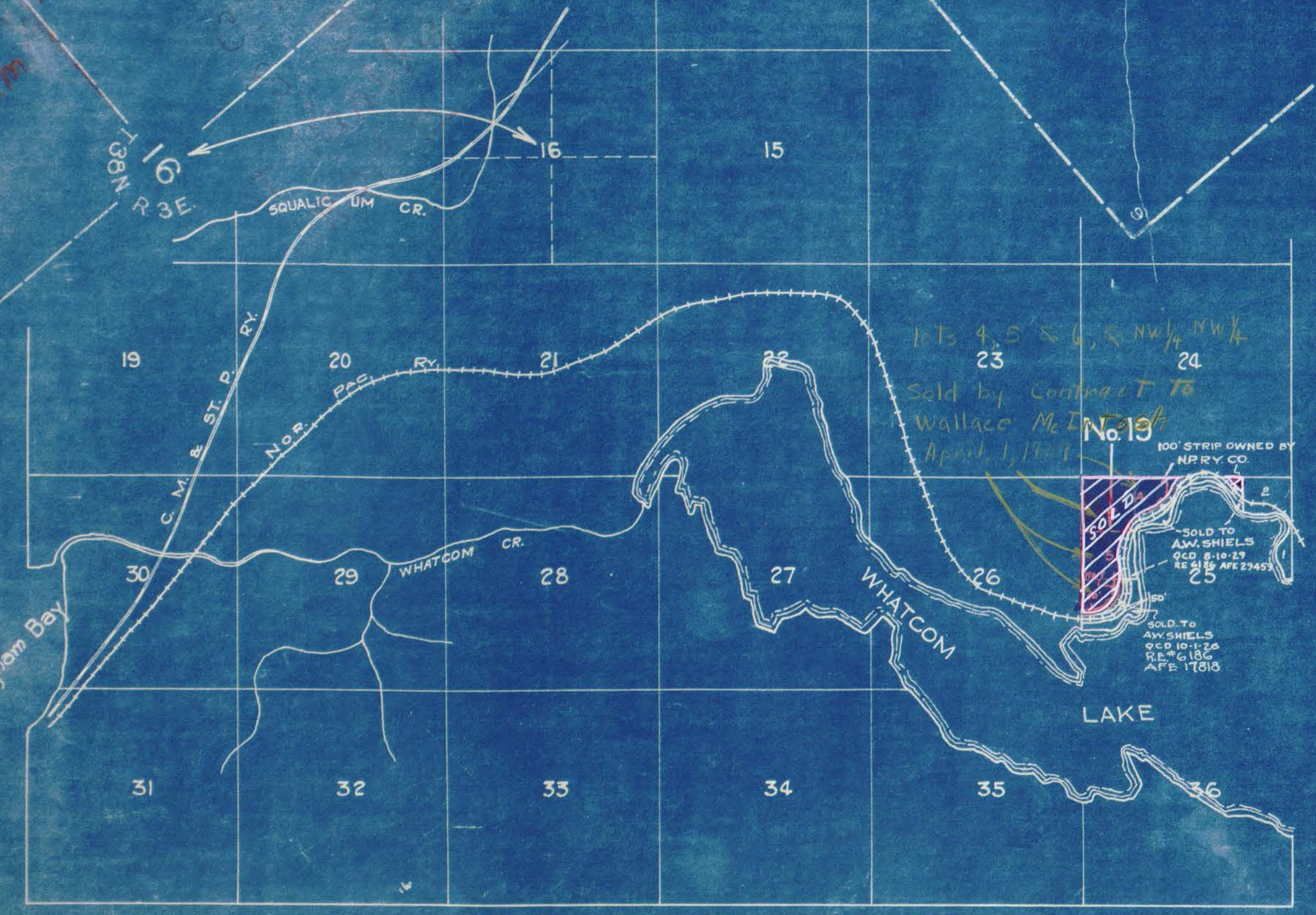




PARCEL NUMBER	GRANTOR	GRABEE	INSTRUMENT	DATE	RECORD	ACRES	REMARKS
1	State of Washington	R.B.&C.R.R.Co.	Deed	1-2-01	55,511	Jan. 8, 1901	6128
2	M. A. Schuler & Husband	R.B.&C.R.R.Co.	W.D.	2-4-98	43, 45, Feb. 8, 1898		6128
3			No Deed				6128
4	O. B. Doney & Wife	R.B.&C.R.R.Co.	W.D.	2-4-98	43, 45, Feb. 8, 1898		6128
5	M. A. Schuler & Husband	R.B.&C.R.R.Co.	W.D.	2-4-98	43, 45, Feb. 8, 1898		6128
6	M. A. Schuler & Husband	R.B.&C.R.R.Co.	W.D.	2-4-98	43, 45, Feb. 8, 1898		6128
7	R.B.&C.R.R.Co.	Van Wyck Township	Order of R.R. Commission	4-30-14			6103
8	R.B.&C.R.R.Co.	Van Wyck Township	Order of R.R. Commission	4-30-14			6104
9	R.B.&C.R.R.Co.	Van Wyck Township	Order of R.R. Commission	4-30-14			6103
10	R.B.&C.R.R.Co.	Van Wyck Township	Order of R.R. Commission	4-30-14			6104
11	M.A. Schuler & Husband	R.B.&C.R.R.Co.	W.D.	2-4-98	43, 45, Feb. 8, 1898		6128
12	W. Stewart	R.B.&C.R.R.Co.	W.D.	7-23-89	13, 370, Feb. 8, 1899		6122
13	D. E. Pelley & Wife	R.B.&C.R.R.Co.	W.D.	8-23-89	13, 370, Feb. 8, 1899		6104
14	Alex. Van Wyck & Wife	R.B.&C.R.R.Co.	W.D.	5-16-03	13, 370, Feb. 8, 1899		6103
15	Geo. Sullivan & Wife	R.B.&C.R.R.Co.	W.D.	7-21-89	13, 370, Feb. 8, 1899		6103
16	B. Holton	R.B.&C.R.R.Co.	W.D.	5-8-89	13, 370, Feb. 8, 1899		6103
17	M. L. Woon & Wife	R.B.&C.R.R.Co.	W.D.	7-29-89	13, 370, Feb. 8, 1899		6103
18	Geo. Wahl & Wife	R.B.&C.R.R.Co.	W.D.	5-7-89	13, 370, Feb. 8, 1899		6122
19	R.B.&C.R.R. Co.	B.N. Ry. Co.	Q.C.D.	10-21-12, 123, 227, Oct. 29-1912			6158

INSERT  
SCALE - 2 INCHES PER MILE



Postal Tel & C. Co. Wires on Ry. Cos. Poles. Bellingham to Sumas, R.N. 4

RIGHT OF WAY AND TRACK MAP  
**CHICAGO, MILWAUKEE & ST. PAUL RY. CO.**  
OPERATED BY THE  
**CHICAGO, MILWAUKEE & ST. PAUL RY. CO.**  
BELLINGHAM DIVISION MAIN LINE  
STATION 209+29.9 TO STATION 420+49.9  
SCALE 1" = 400 FT. JUNE 30 1918  
OFFICE OF VALUATION ENGINEER  
CHICAGO, ILLINOIS

Sheet No. 2 of 17 sheets of C. M. & St. P. Ry. Co. Main Line  
from survey station 209+29.9 to survey station 420+49.9  
*A. E. Lodge*  
Valuation Engineer

Y. WASH. 22  
2